



SELA BUILDERS

“The Frio”

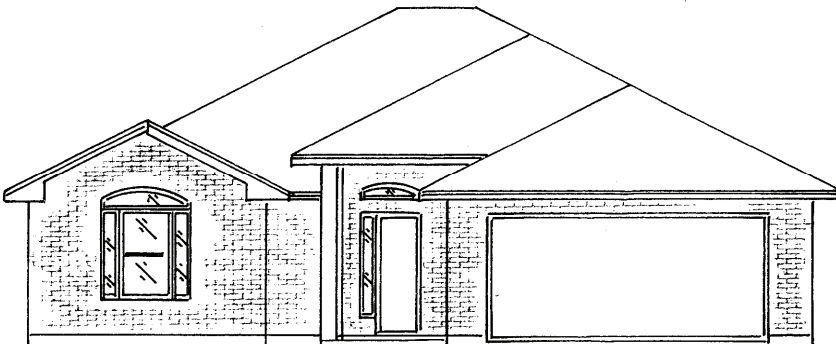
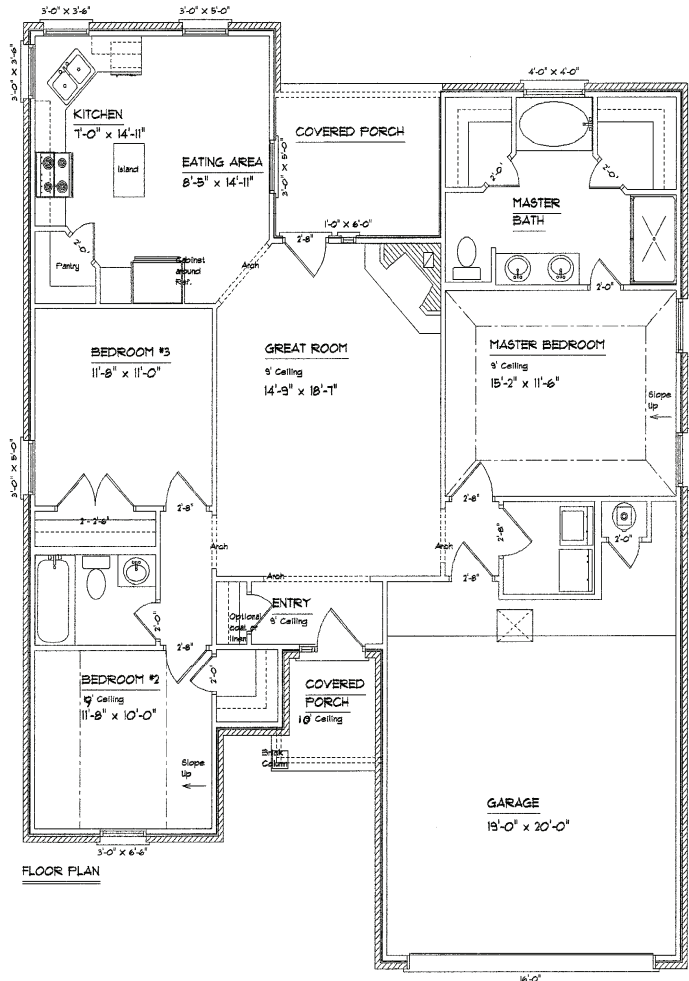
1422 square feet

3 bed/2 bath

2 Car Garage

Our Most Popular Floor Plan!!

- Custom Tile & Cabinets
- GE Appliances
- Double Vanity Sinks in Master Bath
- Garden Tub & 2 Walk-In Closets in Master Bath
- Large Kitchen with Lots of Cabinet Space & Island
- Covered Front and Back Porch
- High Ceilings
- Crown Molding
- Wood Burning Fireplace
- Energy-Efficient Features



**Call or Go Online for more information: 325-232-6554
or go online to
www.selabuilders.com!**