



SELA BUILDERS

“The Guadalupe”

1517 square feet

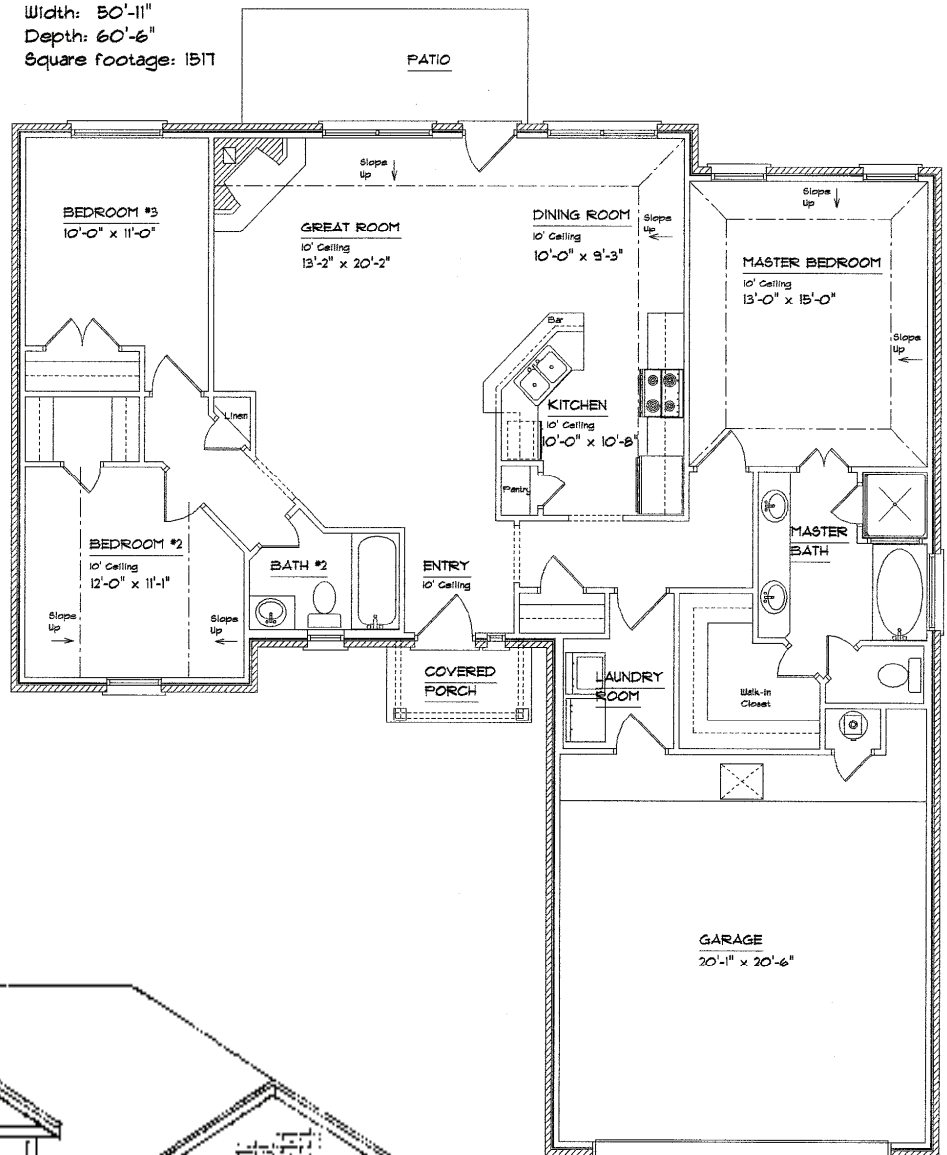
3 bed/2 bath

2 Car Garage

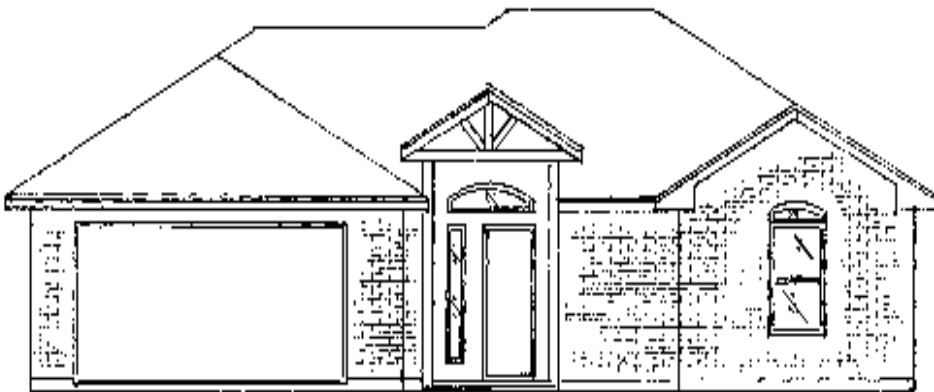
Great Open Floor Plan!

- Custom Tile & Cabinets
- GE Appliances
- Double Vanity Sinks in Master Bath
- Garden Tub & Huge Walk-In Closet in Master Bath
- Large Kitchen with Lots of Cabinet Space & Breakfast Bar
- High Ceilings
- Wood Burning Fireplace
- Energy-Efficient Features

Width: 50'-11"
Depth: 60'-6"
Square footage: 1517



FLOOR PLAN



Call or Go Online for more information: 325-232-6554 or go online to www.selabuilders.com!