



# SELA BUILDERS

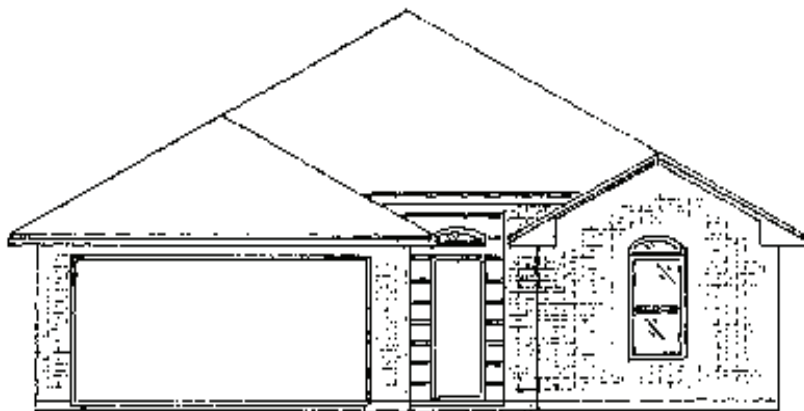
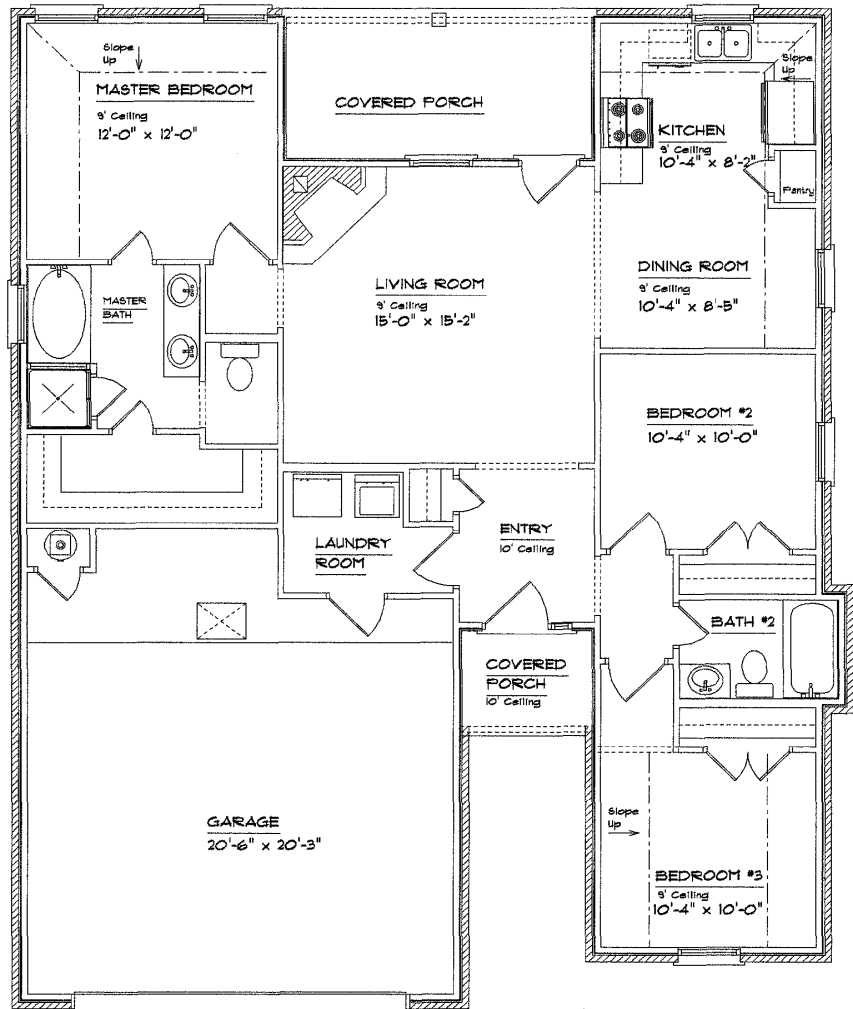
## “The Travis”

1269 square feet

3 bed/2 bath

2 Car Garage

- Custom Tile & Cabinets
- GE Appliances
- Double Vanity Sinks in Master Bath
- Garden Tub & Large Walk-In Closet in Master Bath
- Large Kitchen with Lots of Cabinet Space
- Covered Front and Back Porch
- High Ceilings
- Crown Molding
- Wood Burning Fireplace
- Energy-Efficient Features



**Call or Go Online for more information: 325-232-6554 or go online to [www.selabuilders.com](http://www.selabuilders.com)!**